



Project Name: Snow Storage Sites Analysis and Conceptual Design Project

Date: December 8, 2022

Public Information Centre



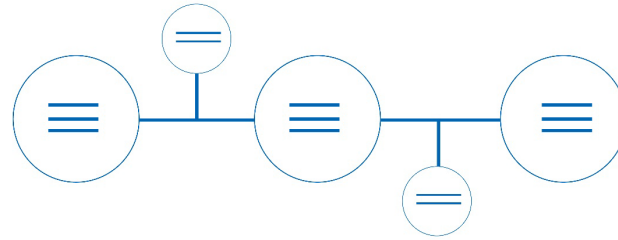
What is the Snow Storage Sites Analysis and Conceptual Design project?

- Identify strategically placed and well-designed snow disposal facilities to effectively store and manage the melt of the snow across Peel Region while mitigating against undesirable environmental and operational impacts
- Evaluate snow storage opportunities
- Implement through the Schedule B Municipal Class Environmental Assessment planning process

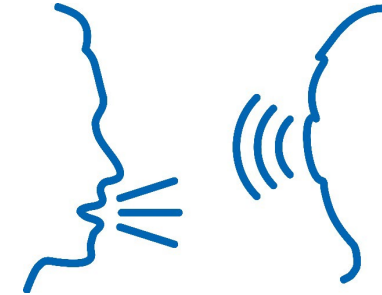
Purpose of the presentation



- Review study purpose and snow storage sites analysis and conceptual design considerations

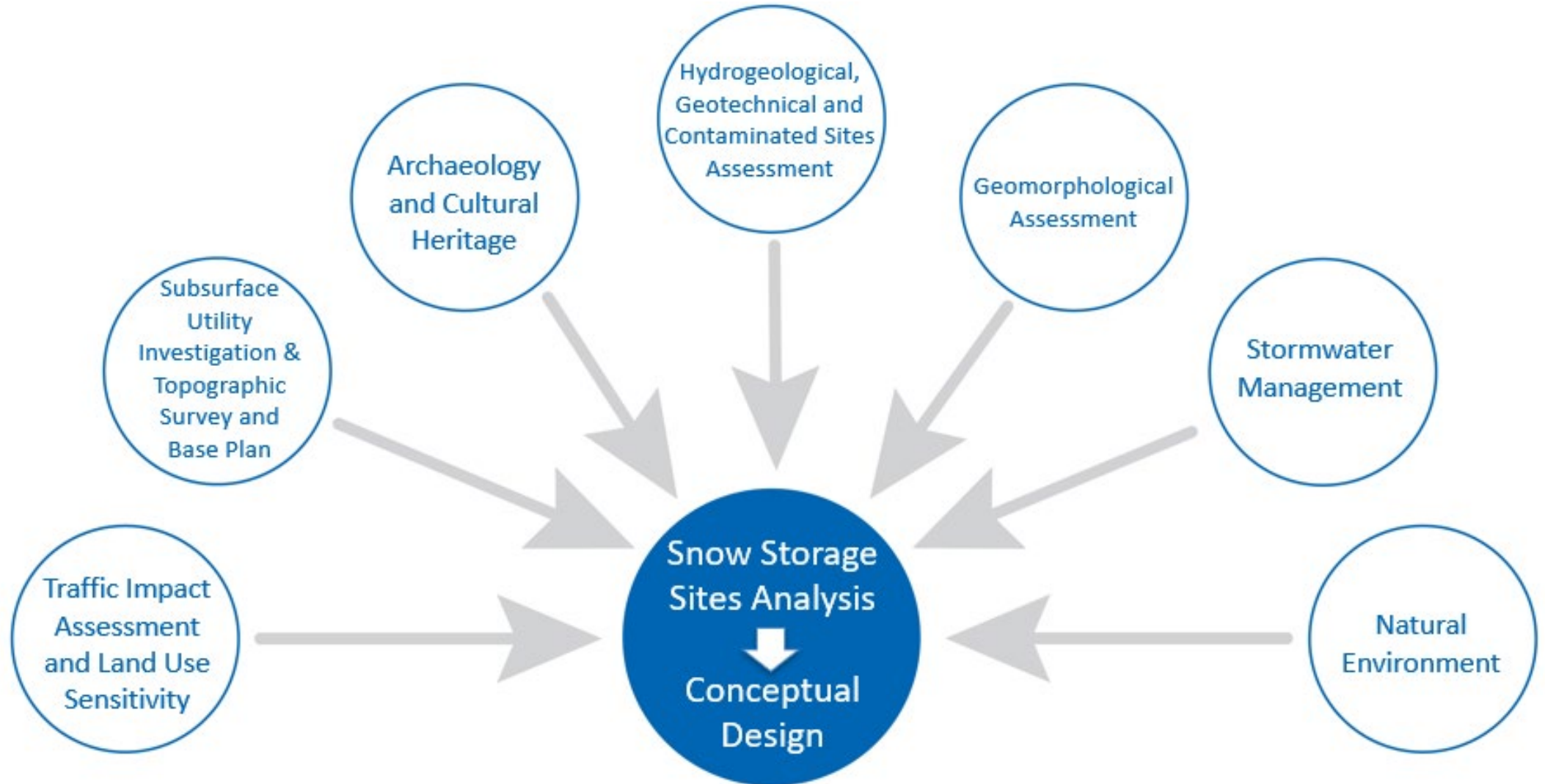


- Present the study timeline, next steps and how to stay engaged



- Receive your feedback on the snow storage sites recommended to proceed to conceptual design

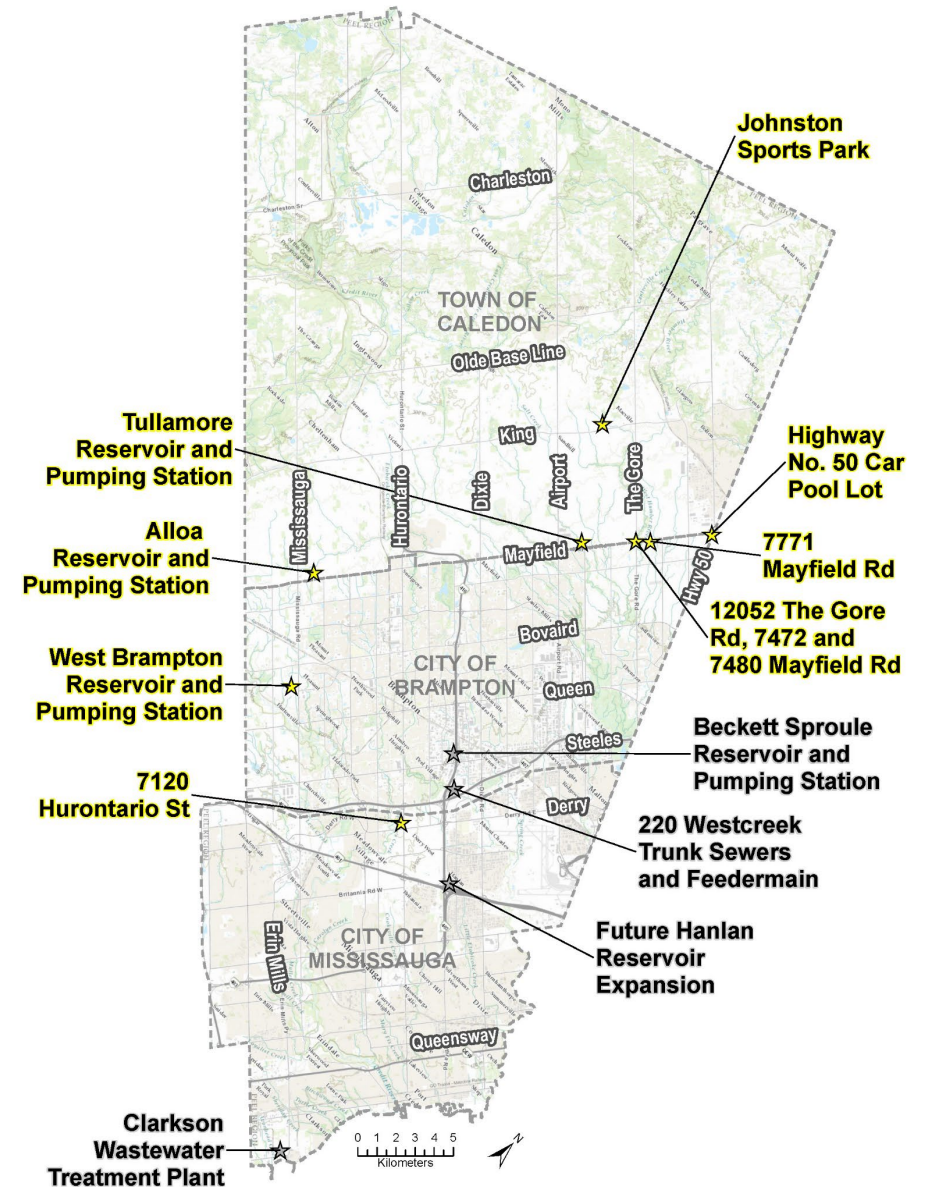
Project scope



Evaluation of 12 snow storage sites

- 4 snow storage sites have been screened out from further analysis
- 8 snow storage sites are validated go forward to design and construction
- For the detailed screening of sites, please visit the project webpage:

www.peelregion.ca/pw/transportation/construction/environmental-assessment/snow-storage-sites



Snow storage sites screened out



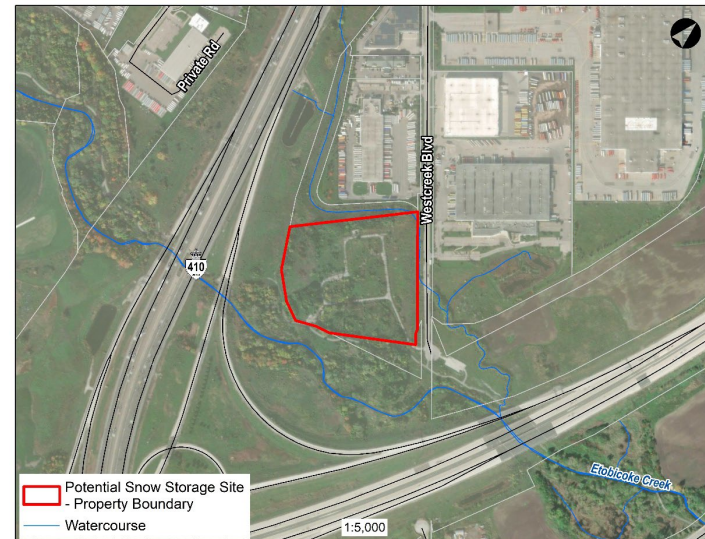
Beckett Sproule Reservoir and Pumping Station



Future Hanlan West Reservoir Expansion



Clarkson Wastewater Treatment Plant



220 Westcreek Boulevard Trunk Sewers and Feedermain

Snow storage sites proposed to be carried forward to design and construction

Highway 50 Carpool Lot



West Brampton Reservoir and Pumping Station



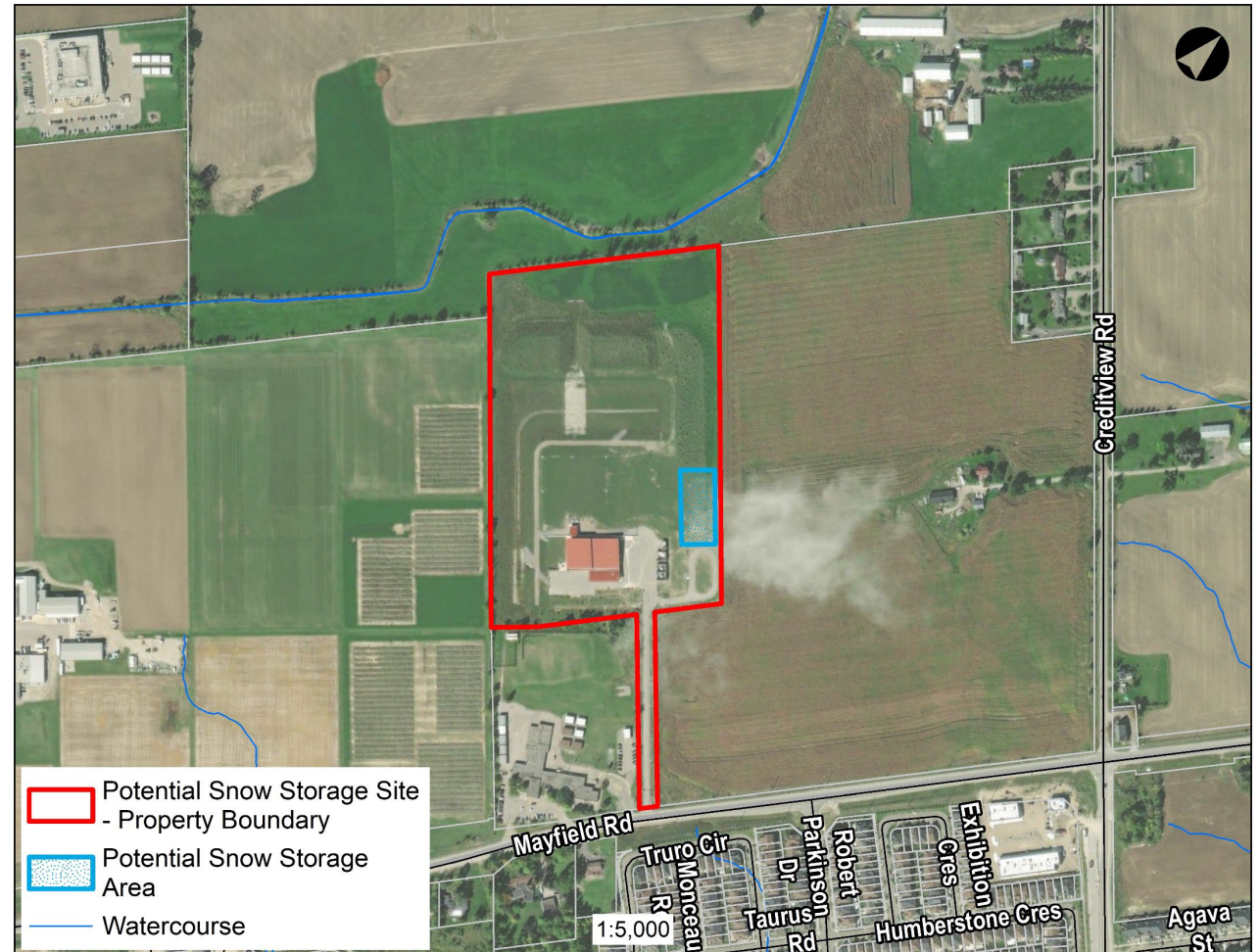
Johnston Sports Park



Tullamore Reservoir and Pumping Station



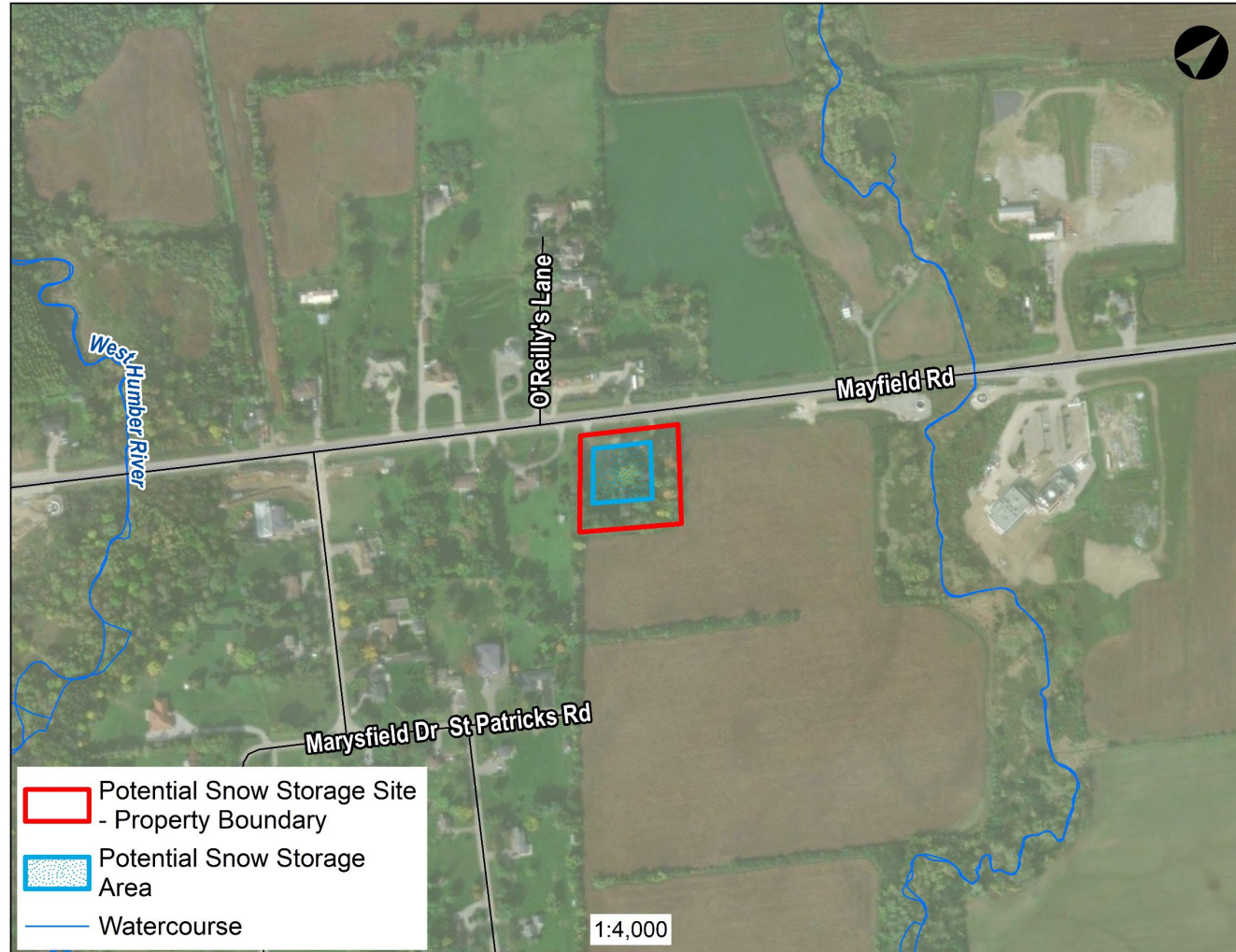
Alloa Reservoir and Pumping Station



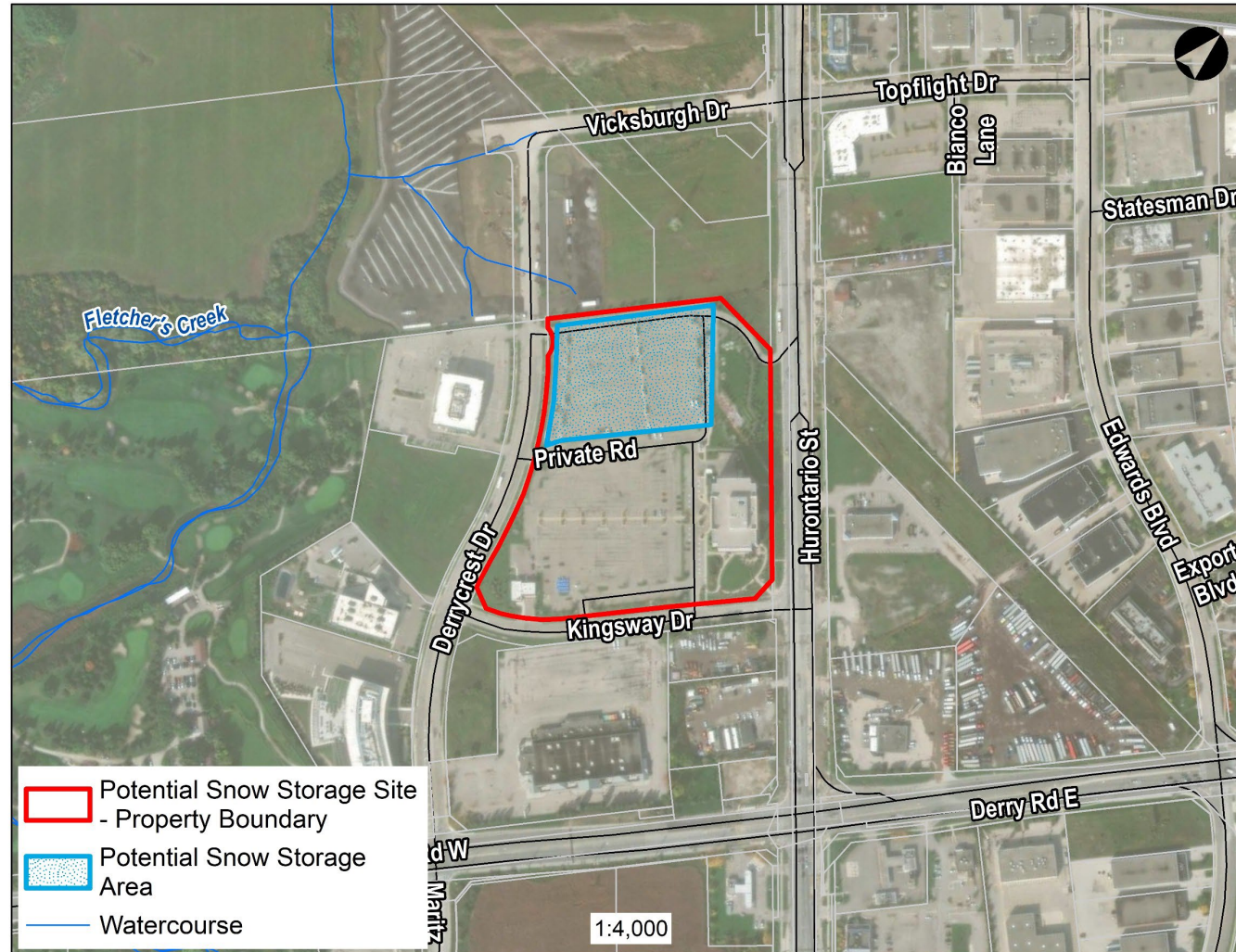
12052 The Gore Road, 7472 and 7480 Mayfield Road



7771 Mayfield Road



7120 Hurontario Street



Conceptual design considerations

- Compliance with applicable provincial and municipal guidelines for snow storage siting and operations (e.g., Ministry of Environment Guideline B-4)
- Develop stormwater management approaches to address potential impacts to water courses and groundwater
- Implement salt mitigation and management strategy



Project timeline and next steps



Next Steps



Review feedback from the public



Document study findings



Prepare conceptual designs for selected snow storage sites



Phased implementation

More questions? Please contact:

Syeda Banuri, M.Eng., P.Eng.

Project Manager

Cell: 416 407 7860

Email: syeda.banuri@@peelregion.ca

Project website:

[www.peelregion.ca/pw/transportation/construction/
environmental-assessment/snow-storage-sites](http://www.peelregion.ca/pw/transportation/construction/environmental-assessment/snow-storage-sites)