

NOTICE OF STUDY COMPLETION

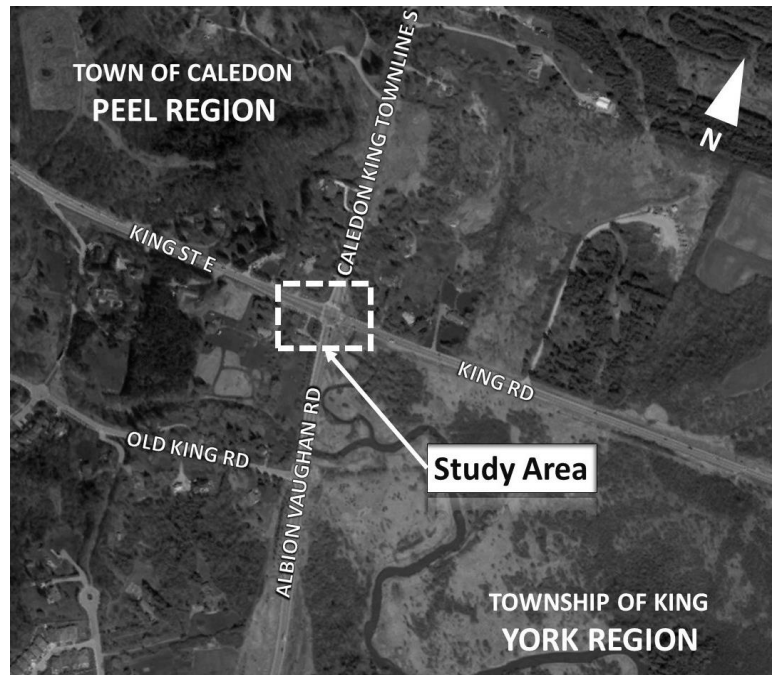
MUNICIPAL CLASS ENVIRONMENTAL ASSESSMENT STUDY FOR ALBION VAUGHAN ROAD AND KING STREET INTERSECTION

The Study

The Region has completed a Schedule 'B' Municipal Class Environmental Assessment (EA) for improvements at the intersection of Albion Vaughan Road and King Street. The limits of the study area are 300m back for each leg of the intersection, as illustrated in the figure below. The intersection is located on the boundary between The Town of Caledon, Township of King, York Region and the Region of Peel.

The study was conducted in compliance with Schedule 'B' of the Municipal Class EA, as outlined in the Municipal Engineers Association Municipal Class Environmental Assessment (October 2000, as amended in 2007, 2011 and 2015 which is approved under the Ontario Environmental Assessment Act. Through consultation with agencies and the public, the preferred design for Albion Vaughan Road and King Street Intersection generally includes the following elements:

- Addition of a northbound right turn lane;
- Converting existing southbound exclusive right turn lane to southbound through-right lane;
- Addition of a westbound right turn lane;
- No modification to the existing eastbound intersection configuration (exclusive left turn, through lane, right-turn lane) and
- Opportunities for integration of sidewalks in all segments of the intersection as well as cycling facilities to tie into eventual active transportation facilities along the King Street corridor.



Study Report Review Period

A Study Report documents the planning, consultation, preliminary design and decision-making process undertaken for the project and will be available for review for 45 calendar days starting August 12th, 2020 and ending on September 26th, 2020.

The Study Report is available for review at

<https://www.peelregion.ca/pw/transportation/environ-assess/albion-vaughan-rd-king-st-ea.htm>. If you are unable to access the Study Report electronically, please contact the Region of Peel Project Manager, Tareq Mahmood, and special accommodations can be made.

Comments

Please provide written comments to the Project Managers listed below within the 45-day review period.

Tareq Mahmood

Region of Peel Project Manager
Infrastructure Programming and Studies
Transportation, Public Works, Region of Peel
10 Peel Centre Dr., Suite B, 4th floor
Brampton, ON L6T 4B9
Tel: 905-791-7800 ext. 7828
Cell: 905-872-6475
Email: tareq.mahmood@peelregion.ca

Jaime Garcia, P.Eng., Ph.D.

Consultant Project Manager
CIMA Canada Inc. (CIMA+)
3027 Harvester Road, Suite 400
Burlington, ON L7N 3G7
Tel: 289-288-0287 ext. 6812
jaime.garcia@cima.ca

If concerns regarding this project cannot be resolved through direct discussion with the Region of Peel, a person or party may make a request to the Minister of the Environment, Conservation and Parks for an elevated level of study to comply with Part II of the Ontario Environmental Assessment Act (referred to as a Part II Order request). The request must be received by the Minister of the Environment, Conservation and Parks by September 26th, 2020.

Direction on how to submit a Part II Order Request is available on the Ministry of the Environment, Conservation and Parks website below:

<https://www.ontario.ca/page/class-environmental-assessments-part-ii-order>.

A copy of the Part II Order request must also be sent to:

Tareq Mahmood

Region of Peel Project Manager

Infrastructure Programming and Studies, Transportation, Public Works, Region of Peel

10 Peel Centre Dr., Suite B, 4th floor

Brampton, ON L6T 4B9

A Part II Order Request Form must be used to request a Part II Order. The Part II Order Request Form is available online on the Forms Repository website at <http://www.forms.ssb.gov.on.ca/> by searching “Part II Order” or “012-2206E” (the form ID number).

The Region of Peel is committed to ensure that all Regional services, programs and facilities are inclusive and accessible for persons with disabilities. Please contact Tareq Mahmood if you need any disability accommodations to review the study documents.

Personal information is collected under the authority of the *Environmental Assessment Act* and will be used in the assessment process. With exception of personal information, all comments shall become part of the public records. Questions about this collection should be directed to the Region Project Manager listed above.

Construction statement regarding COVID-19

Critical infrastructure construction is an essential service. We’re keeping employees, contractors and the community safe by complying with [provincial guidelines](#), physical distancing, using personal protective equipment, and adjusting work schedules and shifts.

Construction project updates can be found at peelregion.ca/construction.

Follow [Peel Public Works on Twitter](#) for service updates and changes.

The Notice was first issued on August 12, 2020