

Municipal Class Environmental Assessment

AIRPORT ROAD ENVIRONMENTAL ASSESSMENT UPDATE from 1.0 km north of Mayfield Road to 0.6 km north of King Street, Town of Caledon



Update to Notice of Commencement

Issue No. 1: September 2012

We've been busy!

Since you received the Notice of Commencement, we have:

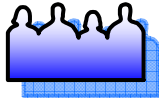
- a new contact person :
 - Sally Rook, Project Manager, 905-791-7800 x7842
Sally.rook@peelregion.ca
- retained IBI Group (Canada) Inc. for supporting technical studies in
 - Drainage and Storm Water Management Plans
 - Archaeology and Built Heritage
 - Noise Impact Assessment / Mitigation
 - Air Quality
 - Pavement and Geotechnical
 - Structures Assessment
- held a Project Kick-off Meeting with all Agencies;
- had an on-site meeting with the Toronto Regional Conservation Authority to identify watercourses, wetlands, areas of concern etc.;
- completed topographical survey for engineering information;
- completed Title Searches and Obtained Title Plans; and
- completed the preliminary traffic analysis.



Municipal Class Environmental Assessment

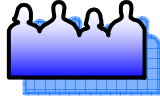


Technical Agency Project Kick-Off



Public Information Centre No. 2

Notice of Completion



Public Information Centre No. 1

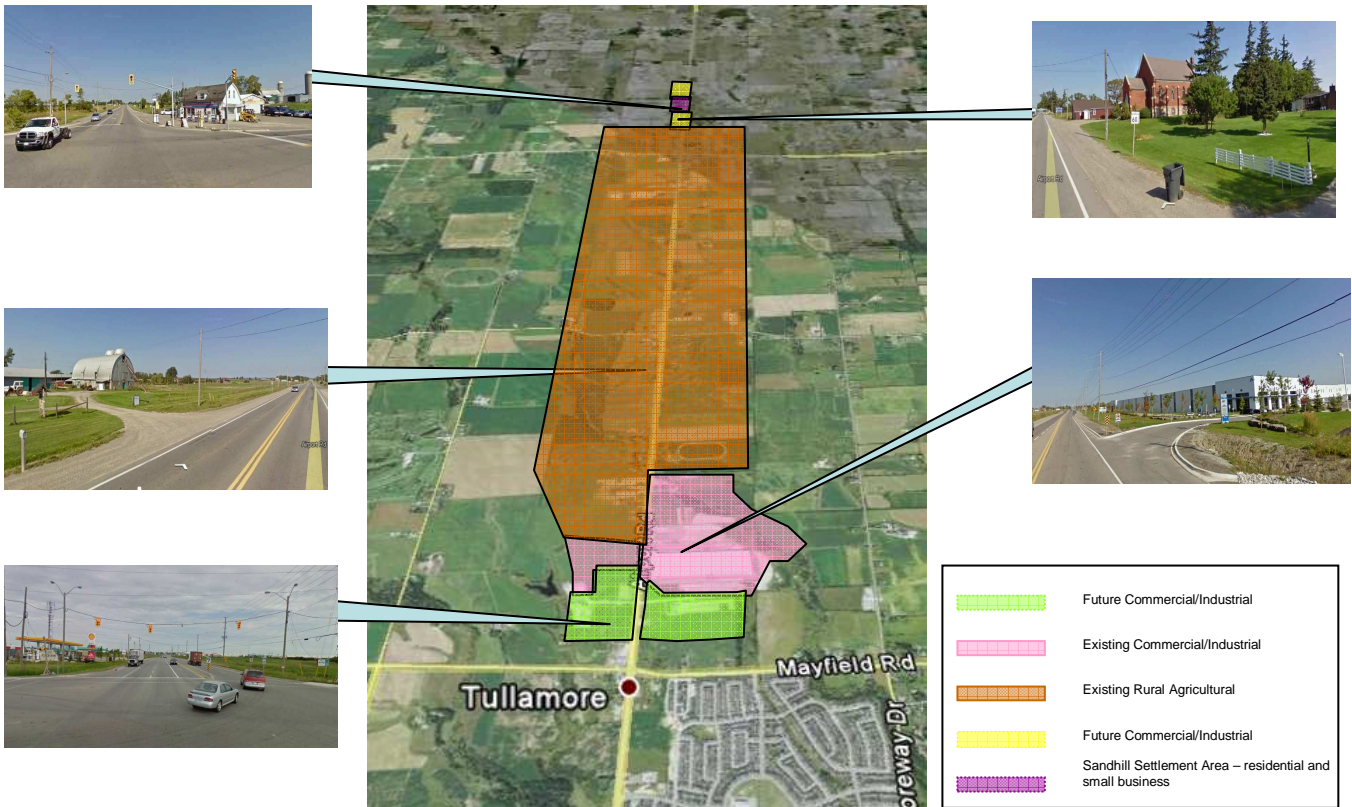
Environmental Study Report

This Environmental Assessment will incorporate elements from the Region's:

- Active Transportation Plan;
- Goods Movement Action Plan; and
- The Regional Road Characterization Study

Notices will be sent to you with the date and location of our first Public Information Centre.

Your input is valuable so we hope to see you there!



Stay updated with us!

Visit the project website:
peelregion.ca/pw/roads/envIRON-assess/ or

Sally Rook, Project Manager
 905-791-7800 x7842
 sally.rook@peelregion.ca

