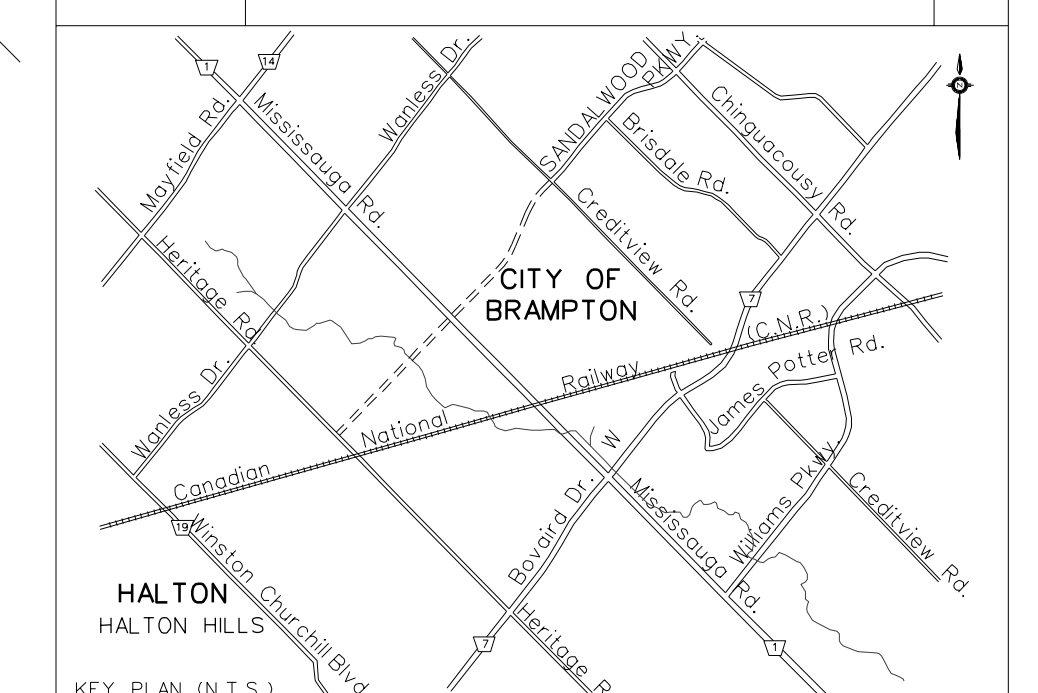


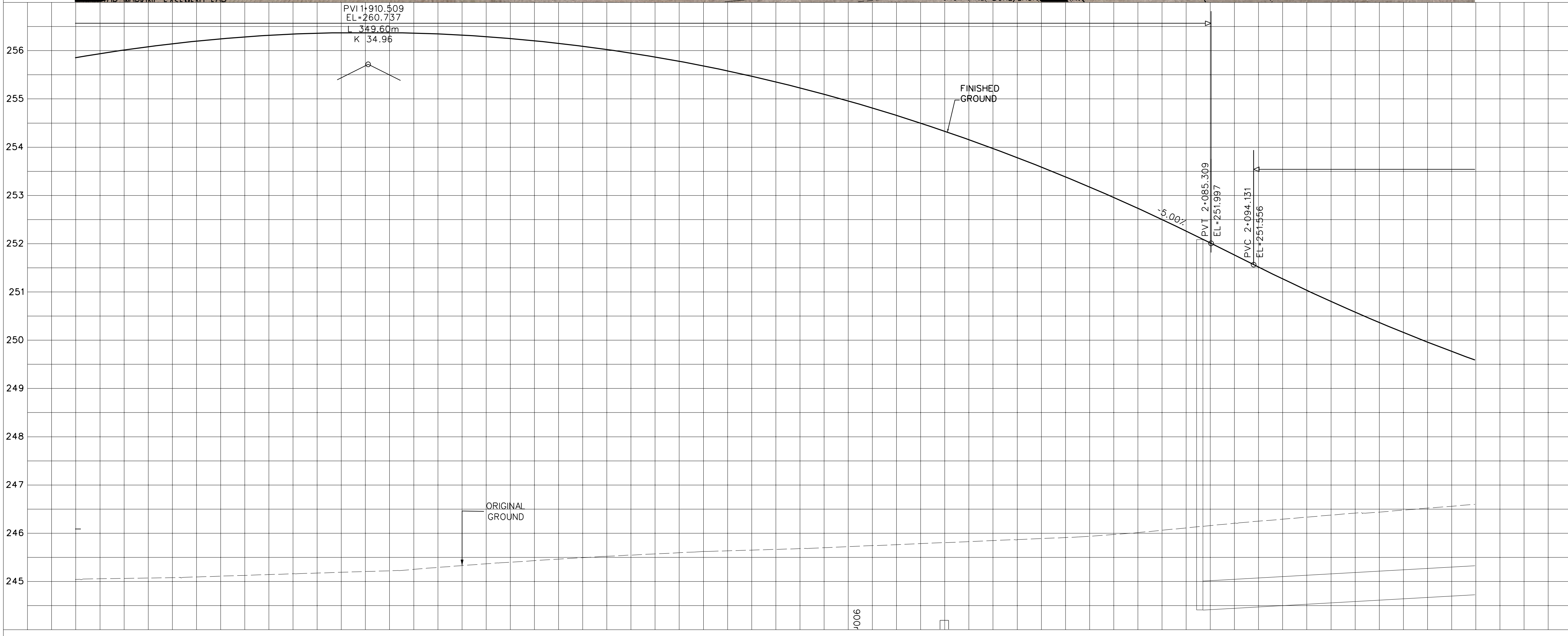
SERVICE DATA					
SERVICE	DATE	INIT.	SERVICE	DATE	INIT.
SAN SEWERS			GAS MAINS		
STORM SEWERS			BELL U/G CABLE		
WATERMANS			HYDRO U/G CABLE		
TRANSIT			ONT. HYDRO		
PARKS & REC.			CTV		
ONT. CLEAN WATER					



REVISIONS		
DATE	DETAILS	INIT.

AECOM

AECOM CANADA Ltd.
 300 TOWN CENTRE BLVD., MARKHAM,
 ONTARIO, CANADA L3R 5Z6
 T905.477.8700 F905.477.1456



General Notes

- All Driveways ASPHALT Unless Otherwise Noted.
- All Service Locations Are Approximate And Must Be Located Accurately In The Field.
- Denotes Building - Not Located
- Denotes Building Located
- Type 'B' Bedding Unless Otherwise Noted (SAN)

B.M. No. Elev.

The Contractor is Responsible For Locating And Protecting All Existing Utilities Prior To And During Construction Location of Existing Utilities Approximate Only, To Be Verified In Field By Contractor.

Designed by: _____ Chkd: _____ Approved by: _____

NOTICE TO CONTRACTOR

48 HOURS PRIOR TO COMMENCING WORK NOTIFY THE FOLLOWING:

- THE REGIONAL MUNICIPALITY OF PEEL
- CITY OF MISSISSAUGA WORKS DEPT.
- CITY OF BRAMPTON WORKS DEPT.
- TOWN OF CALEDON WORKS DEPT.
- BELL TELEPHONE COMPANY
- CONSUMERS GAS COMPANY
- MINISTRY OF TRANSPORTATION
- ONTARIO CLEAN WATER AGENCY
- HYDRO ELECTRIC POWER COMM. OF ONTARIO
- HYDRO ELECTRIC COMM. CITY OF MISSISSAUGA
- HYDRO ELECTRIC COMM. CITY OF BRAMPTON
- CABLE TELEVISION

10m 0 10 20 30m HORIZONTAL SCALE
 1m 0 1 2 3m VERTICAL SCALE

Region of Peel
 Working for you

MISSISSAUGA ROAD
 (FROM BOVAIRD DR. TO MAYFIELD RD.)
 PLAN AND PROFILE

Sta. 1+850.00 To Sta. 2+140.00

256.002	256.234	256.352	256.354	256.243	256.017	255.677	255.222	254.653	253.969	253.171	252.259	251.268	250.364	249.580	PR. ROAD ELEV.	Lots
255.58	255.39	255.10	254.69	254.16	253.52	252.77	251.90	250.93	249.99	249.18	248.49	247.91	247.46	247.13	EX. ROAD ELEV.	Area
1+860	1+880	1+900	1+920	1+940	1+960	1+980	2+000	2+020	2+040	2+060	2+080	2+100	2+120	2+140	ROAD CHAINAGE	Project No. 105163

Checked by	P.C.	Drawn by	V.M.	Project No.	105163
Date	NOV 2012	Sheet	4 of 19	Plan No.	PP04